

"I'm Still Me" - A Unique Lens at Keeping Personhood Alive in Dementia through Personal Perspectives and a One-Act Play



- Innovative use of theater to express perspectives of individuals with dementia and their care partners
- Raw and insightful conversation with persons living with some form of cognitive impairment

Thursday, June 9, 2022
5:45 PM ET – 8:15 PM ET

**Live Stream Series
(Online Synchronous Training)**

**Complimentary CE Event
courtesy of CarePatrol**

Space is limited.
Please scan QR code or
register online at:



<https://bit.ly/CarePatrol-060922>

2 CREDIT HOURS APPROVED FOR:

- **Social Workers**
ASWB ACE; New York State Education Department's State Board for Social Work – 2 General CE Credits
- **Case Managers**
CCMC – 2 Contact Hours
- **Nurses**
CA Board of Registered Nursing – 2 Contact Hours
- **Counselors**
NBCC; New York State Education Department's State Board for Mental Health Practitioners – 2 Credit Hours
- **Long Term Care Administrators**
NAB/NCERS (Pending) – 2 Participant Hours

Attendance or applied credit certificate available for other credentials.

Please make sure to check with your own state board to ensure transferability of CE credit.

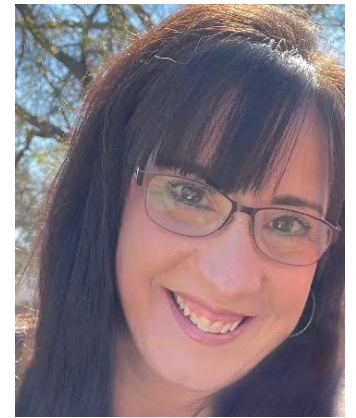
PRESENTERS:



Lynn Ross, LMSW
Advocate for People with Dementia



Carolyn Cook
Actor



Anne McSweeney, LCSW
Owner/Founder of CEU Creations

This event is generously sponsored by:





"I'm Still Me" – A Unique Lens at Keeping Personhood Alive in Dementia through Personal Perspectives and a One-Act Play

AGENDA

5:45 PM ET – 6:00 PM ET:	Log in and Virtual Networking
6:00 PM ET – 8:00 PM ET:	Presentation
8:00 PM ET – 8:15 PM ET:	Door Prizes

More than 16 million people in the United States are living with cognitive impairment. With age being the greatest risk factor, this number is expected to dramatically increase as the Baby Boomer generation passes the age of 65. As helping professionals, we often see the clients who are the human beings behind these statistics and wish to continue to live their life with meaning, dignity, and purpose. This eye-opening discussion will include the personal perspectives of a social worker and others living with some form of cognitive impairment. Next, participants will view a video of Carolyn Cook, a renowned Atlanta actor/director and caregiver for her mother with dementia, perform a one-act, one-person play through the eyes of both the person with dementia and the caregiver. Anne McSweeney, LCSW and CEU Creations Educational Director, will lead participants through a discussion on personhood and how helping professionals can truly help their clients continue to live quality lives with purpose even through a dementia diagnosis.

BY THE END OF THIS SESSION, THE PARTICIPANT WILL BE ABLE TO:

- 1. State several perspectives, resources, and ideas that were shared first-hand from persons with cognitive impairment.**
- 2. Identify ways to preserve personhood as a client/loved one is diagnosed with dementia.**
- 3. Define the person-centered approach to care.**

Course Interaction and Technical Requirements: This live webinar is fully interactive. Attendees may ask and answer questions throughout the presentation and participate in instructor-led discussions. A computer or mobile device is required. Zoom account is *not* required. You will receive an email approximately 24 hours prior to the start of the class with a link to the webinar.

In order to receive credit, you must login on time, attend the entire presentation, and complete an online evaluation within 30 minutes of the conclusion of the event. Attendance log and Zoom analytics will be reviewed by the CE Director. Certificates will be provided in approximately 7-10 business days.


Target audience: Social workers, case managers, discharge planners, nurses, counselors, long term care administrators, and other healthcare professionals – beginning content level.

SOCIAL WORKERS: CEU Creations, #1239, is approved to offer social work continuing education by the Association of Social Work Boards (ASWB) Approved Continuing Education (ACE) program. Organizations, not individual courses, are approved as ACE providers. State and provincial regulatory boards have the final authority to determine whether an individual course may be accepted for continuing education credit. CEU Creations maintains responsibility for this course. ACE provider approval period: [11/22/21-11/22/24]. Social workers completing this course receive 2 general continuing education credits.

CEU Creations, Inc. is recognized by the New York State Education Department's State Board for Social Work as an approved provider of continuing education for licensed social workers #SW-0616. This activity is approved for 2 contact hours.

NURSES: 2 Contact Hours - CEU Creations is an approved provider of nursing CEs through the California Board of Registered Nursing. Provider number: CEP16563. All states retain their own licensing authority through their own boards. Please make sure to check with your own state board to ensure transferability of the CE credits.

COUNSELORS: 2 Contact Hours –

 CEU Creations has been approved by NBCC as an Approved Continuing Education Provider, ACEP No. 6941. Programs that do not qualify for NBCC credit are clearly identified. CEU Creations is solely responsible for all aspects of the programs.

CEU Creations, Inc. is recognized by the New York State Education Department's State Board for Mental Health Practitioners as an approved provider of continuing education for licensed mental health counselors. #MHC-0199. This activity is approved for 2 contact hours.

Long Term Care Administrators: This program has been submitted for consideration, but is not yet approved, for Continuing Education credits by NAB/NCERS. For more information, contact Patty Tucker at patty@ceucreationsinc.com.

Cancellation Policy: Registrants must cancel via email or phone at patty@ceucreationsinc.com or 770-880-9873 (contacting other staff members/leadership does not guarantee your cancellation.) No faxes or mail cancellations will be accepted.

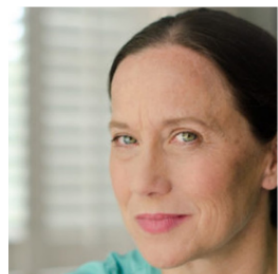
PRESENTER BIOS



Lynn Ross, LMSW

Lynn Ross, LMSW, is a retired medical social worker that has found it hard to retire. From her experience as an Activity Director in a skilled nursing facility, to the director of an Alzheimer's Day program, as a geriatric care coordinator with a local elder law attorney, and as a medical social worker for ten years, Lynn brings a wealth of knowledge to her part time work with Caring Companions of Atlanta, a home care agency. In 2017, she retired from the Movement Disorders program in the Department of Neurology at Emory University, and since has volunteered with several organizations serving those living with dementia in Georgia. Lynn serves on the Advisory Councils for Culture Change of Georgia, and Georgia Alzheimer's and Related Dementias (GARD) State Plan. With GARD, she is a member of the Outreach & Partnership Workgroup.

Her other interests include arts/crafts, Mixed Media especially, and card making. Lynn lives in Atlanta.



**Carolyn Cook,
Actor**

Carolyn Cook is the founder and first artistic director of Theatre du Reve. She has more than twenty-five years of experience as a professional actor, director, producer, teacher, and acting coach. Carolyn has worked as an actor and/or director with some of the top theaters in Atlanta including Georgia Shakespeare, Horizon Theatre, The Alliance Theatre, Actor's Express, Theatre in the Square, Seven Stages, and Theater Emory. She has taught acting and theatre studies at Emory University, Oglethorpe University, Pebblebrook High School, and the Robert Mello Studio. Carolyn has been on the dementia journey for over 10 years now. Her mother lives with Alzheimer's disease and lives in an assisted living facility. As a family member, Carolyn sought to educate herself in best practices for dementia care. She is a graduate of the 2015 Memory Bridge Training Retreat, a five-day intensive program leading to positive, meaningful dementia relationships. Carolyn co-developed and performed in *Blackberry Winter*, a play by Steve Yockey about a woman coming to terms with her new role as a caregiver.



**Anne
McSweeney,
LCSW,
Owner/Founder
of CEU Creations**

Anne McSweeney is a Licensed Clinical Social Worker with a unique and diverse background in medical social work, education and community relations. Anne is the owner and Educational Director of CEU Creations. For over 10 years, CEU Creations has been providing cutting-edge, educational trainings to clinicians throughout the United States through live and online CE training. One of the main missions of CEU Creations is to remove boredom from CE training and use innovative learning techniques to engage learners. Many of CEU Creations' trainings have been also been featured at professional conferences – both on state and national levels. Anne has been a Licensed Social Worker in GA since 1994. Prior to finding her niche providing educational trainings, Anne practiced medical social work for over 8 years – working primarily with the geriatric population in home health, hospice and dialysis. In 2015, Anne was appointed to the Fulton County Commission on Elderly Affairs. She received her undergraduate degree in Psychology from Auburn and her Masters in Social Work at the University of Alabama. She resides in Alpharetta, GA with her husband and 2 daughters.