

Empowering Caregivers: Responding to Resistance with Empathy and Understanding



FEATURING:

- Presentation of the play *Steering into the Skid*, written by Deborah Ann Percy and Arnold Johnston, followed by a panel discussion

- 2 Ethics hours with an expert speaker in the field of Aging

Thursday, June 8, 2023

5:45 PM ET – 8:15 PM ET

**Live Stream Series
(Online Synchronous Training)**

**Complimentary CE Event
courtesy of CarePatrol**



Space is limited.
Please scan QR code or
register online at:

https://bit.ly/CarePatrol_0608

2 CREDIT HOURS APPROVED FOR:

- **Social Workers**
ASWB ACE – 2 Ethics CE Credits
New York State Education Department's State Board for Social Work – 2 Contact Hours
- **Case Managers**
CCMC – 2 Ethics Hours
- **Nurses**
California Board of Registered Nursing – 2 Contact Hours
- **Counselors** 2 Ethics Hours or 2 Contact Hours*
NBCC ACEP – 2 Contact Hours
New York State Education Department's State Board for Mental Health Practitioners – 2 Contact Hours
- **Long Term Care Administrators**
NAB/NCERS (Pending) – 2 Participant Hours

*Some states do not recognize/require Ethics hours for counselors, for those cases Contact Hours will be awarded.

*Attendance or applied credit certificate available for other credentials.
Please make sure to check with your own state board to ensure transferability of CE credit.*

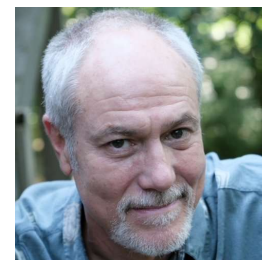
PRESENTERS:



Rebecca Abenante,
MA, MSW, LSW, ASW-G



Judith Gantly,
Actor



Barry Stoltze,
Actor

This event is generously sponsored by:



CARE *Patrol*™

Your Partner In Senior Care Solutions

For more information on the course, accommodations for disability, grievances, or any other concerns, please contact CEU Creations via Patty Tucker at patty@ceuc creationsinc.com or 770-880-9873.

Copyright 2023 – CEU Creations | www.ceuc creationsinc.com



Empowering Caregivers: Responding to Resistance with Empathy and Understanding

AGENDA

5:45 PM ET – 6:00 PM ET:	Log in and Virtual Networking
6:00 PM ET – 7:00 PM ET:	One-Act Dementia Play <i>Steering Into the Skid</i> and Panel Discussion – Play Written by Deborah Ann Percy and Arnold Johnston; Reading of the play by Judith Gantly and Barry Stoltze, Actors; Panel Discussion
7:00 PM ET – 8:00 PM ET:	Managing Resistance when Working with Seniors and Their Loved Ones – Rebecca Abenante, MA, MSW, LSW, ASW-G
8:00 PM ET – 8:15 PM ET:	Door Prizes

Working with seniors and their loved ones can be challenging yet rewarding work. This event will begin with the reading of a one-act play, *Steering into the Skid*, which highlights a year of changes and adapting to the challenges of aging and Alzheimer's. A discussion panel of the play will follow. In the second part of the event, participants will engage in a discussion around managing resistance when working with seniors and their care partners presented by Rebecca Abenante, MA, MSW, LSW ASW-G, Healthy Aging Coordinator and Geriatrics Fellowship Program Coordinator at Atlantic Health System. Participants will leave with new insights, tools, and resources for your work with older adults and their loved ones.

BY THE END OF THIS SESSION, THE PARTICIPANT WILL BE ABLE TO:

1. Identify some of the challenges faced by caregivers and solutions that can be implemented.
2. Name some ethical principles/dilemmas that can arise around caregiving, care partner mental health and advanced care planning and how the helping professional can assist in resolving these.
3. State two best practices and resources around Advance Care Planning with seniors and their care partners.

Course Interaction and Technical Requirements: This live webinar is fully interactive. Attendees may ask and answer questions throughout the presentation and participate in instructor-led discussions. A computer or mobile device is required. Zoom account is *not* required. You will receive an email approximately 24 hours prior to the start of the class with a link to the webinar.

In order to receive credit, you must login on time, attend the entire presentation, and complete an online evaluation within 30 minutes of the conclusion of the event. Attendance log and Zoom analytics will be reviewed by the CE Director. Certificates will be provided in approximately 7-10 business days.

Target audience: Social workers, case managers, discharge planners, nurses, counselors, long term care administrators, and other healthcare professionals.

SOCIAL WORKERS: CEU Creations, #1239, is approved as an ACE provider to offer social work continuing education by the Association of Social Work Boards (ASWB) Approved Continuing Education (ACE) program. Regulatory boards are the final authority on courses accepted for continuing education credit. ACE provider approval period: [11/22/21-11/22/24]. Social workers completing this course receive 2 Ethics continuing education credits.

CEU Creations, Inc. is recognized by the New York State Education Department's State Board for Social Work as an approved provider of continuing education for licensed social workers #SW-0616. This activity is approved for 2 contact hours.

NURSES: 2 Contact Hours - CEU Creations is an approved provider of nursing CEs through the California Board of Registered Nursing. Provider number: CEP16563. All states retain their own licensing authority through their own boards. Please make sure to check with your own state board to ensure transferability of the CE credits.

COUNSELORS: 2 Ethics Hours or 2 Contact Hours –



CEU Creations has been approved by NBCC as an Approved Continuing Education Provider, ACEP No. 6941. Programs that do not qualify for NBCC credit are clearly identified. CEU Creations is solely responsible for all aspects of the programs.

CEU Creations, Inc. is recognized by the New York State Education Department's State Board for Mental Health Practitioners as an approved provider of continuing education for licensed mental health counselors. #MHC-0199. This activity is approved for 2 contact hours.

Long Term Care Administrators: This program has been submitted for consideration, but is not yet approved, for Continuing Education credits by NAB/NCERS. For more information, contact Patty Tucker at patty@ceuc creationsinc.com.

Cancellation Policy: Registrants must cancel via email or phone at patty@ceuc creationsinc.com or 770-880-9873 (contacting other staff members/leadership does not guarantee your cancellation.) No faxes or mail cancellations will be accepted.



Empowering Caregivers: Responding to Resistance with Empathy and Understanding

PRESENTER BIOS:



Rebecca Abenante,
MA, MSW, LSW,
ASW-G

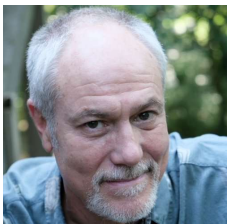
Rebecca Abenante coordinates the Healthy Aging Program at Atlantic Health System and has been involved with a wide variety of geriatric services at Morristown Medical Center since 2009. With the addition of a second fellow position in 2021, Rebecca also became the Geriatrics Fellowship Program Coordinator at Morristown Medical Center. Rebecca has been working with seniors and their families for more than 20 years in a variety of settings, including senior affordable housing, assisted living, skilled nursing and acute care. Through the Healthy Aging Program's hotline, community presentations and outpatient social work consultation at the David and Joan Powell Center for Healthy Aging's Geriatric Assessment Center, she has experience educating and guiding older adults and their caregivers towards appropriate services and supports.

In addition to her work with Atlantic Health System, Rebecca has been an adjunct professor at William Paterson University in the Department of Public Health since 2014 and teaches undergraduate students about social gerontology. She has a Bachelor's of Sociology and Certificate in Gerontology from Kean University, a Masters of Arts degree in Counseling from Fairleigh Dickinson University, a Masters of Social Work degree and Certificate in Aging from Rutgers University and is a Licensed Social Worker in the State of New Jersey. Rebecca is also certified by the National Association of Social Workers as an Advanced Social Worker in Gerontology.



Judith Gantly,
Actor

Judith Gantly was nominated the Best Featured Actress by the Newark Star Ledger for her comedic performance in MORNINGS AT SEVEN at the Bickford Theater in NJ. She is a graduate of the American Academy of Dramatic Arts in NYC. Judith performs the one woman play, WALTZING THE REAPER, throughout the country. Her master degree programs include Educational Media Specialist and Early Childhood Education.



Barry Stoltze,
Actor

Barry Stoltze has been a professional actor for 45 years, having gotten his start in L.A. in 1977. He has voiced hundreds of commercials and worked on audiobooks, animation, and gaming and has appeared extensively on stage and screen. Most recently, he was part of Horizon Theatre's ensemble production of WAFFLE PALACE CHRISTMAS and can be seen on Netflix's OZARK and in such films as THE LONGEST RIDE and TYLER PERRY'S BOO! 2. Additionally, Barry wrote and produced I CAN'T TECHNO: A MUSICAL GUIDE TO MODERN TIMES, with song parodies and comedy sketches. Currently, he is preparing to produce the 19th Annual LEND ME AN EAR, an Old Time Radio fundraiser for the Atlanta Community Food Bank, and he has begun performing on keyboard with the Retro band THE STAR-LIGHTERS. Plus he has a couple of screenplays and scripts in the works.