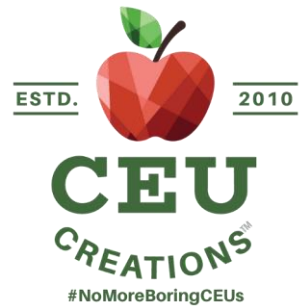


Life Transitions and Cognitive Function: A Play-Inspired Exploration



• Yura Lee, PhD, Associate Professor, Helen Bader School of Social Welfare, University of Wisconsin-Milwaukee

• The reading of the play *The Forager*, a ten-minute play by Tucker Rafferty

Tuesday, December 3, 2024

2:45 PM ET – 4:00 PM ET

Live Stream Series

(Online Synchronous Training)

**Complimentary CE Event
courtesy of Sunrise Senior Living**

Space is limited.
Please scan QR code or
register online at:

https://bit.ly/12_03_24

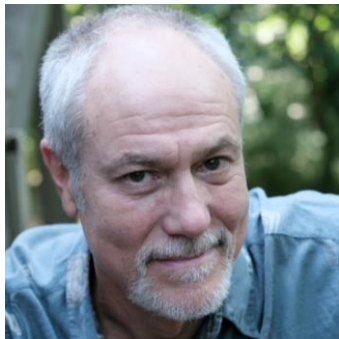


1 CREDIT HOUR APPROVED FOR:

- **Social Workers**
ASWB ACE – 1 CE Credit
New York State Education Department's State Board for Social Work – 1 Contact Hour
- **Case Managers**
CCMC – 1 Contact Hour
- **Nurses**
California Board of Registered Nursing – 1 Contact Hour
- **Counselors**
NBCC – 1 Contact Hour
New York State Education Department's State Board for Mental Health Practitioners – 1 Contact Hour
- **Long Term Care Administrators**
NAB/NCERS – 1 Participant Hour (Pending)

*Attendance or applied credit certificate available for other credentials.
Please make sure to check with your own state board to ensure transferability of CE credit.*

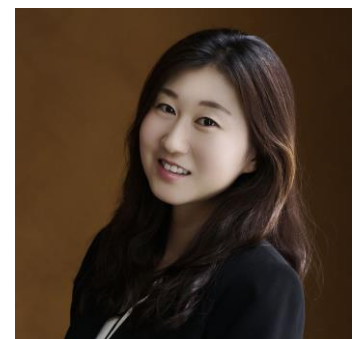
PRESENTERS:



Barry Stoltze, Actor



**Carolyn Cook,
Actor/Director**



**Yura Lee, PhD,
Associate Professor,
Helen Bader School of Social
Welfare, University of
Wisconsin-Milwaukee**

A COMPLIMENTARY EDUCATIONAL EVENT COURTESY OF:



For more information on the course, accommodations for disability, grievances, or any other concerns, please contact CEU Creations at support@ceuc creationsinc.com.

Copyright 2024 – CEU Creations | www.ceuc creationsinc.com



Life Transitions and Cognitive Function: A Play-Inspired Exploration

AGENDA

2:45: PM ET – 3:00 PM ET:	Log in and Virtual Networking
3:00 PM ET – 4:00 PM ET:	Presentation
4:00 PM ET:	Evaluations and adjourn

This training opens with a play, *The Forager*, that explores themes of memory, loss, and connection through food and conversation. Following the performance, Dr. Yura Lee will present research on the impact of major life transitions, such as retirement and the loss of a spouse, on cognitive decline in older adults. The session will explore the preventive role of engaging in mental, physical, and social leisure activities, especially in later life. Dr. Lee will also highlight how participation in these activities can mitigate the risk of dementia, offering practical insights for helping professionals.

BY THE END OF THE SESSION, THE PARTICIPANT WILL BE ABLE TO:

- Identify the effects of late-life transitions, such as retirement and spousal loss, on cognitive decline in older adults.
- Examine the relationship between socioeconomic factors, such as education level, and the risk of dementia in older adults.
- Apply strategies to incorporate leisure activities that promote cognitive health in aging individuals, focusing on mental, physical, and social engagement.

Course Interaction and Technical Requirements: This live webinar is fully interactive. Attendees may ask and answer questions throughout the presentation and participate in instructor-led discussions. A computer or mobile device is required. Zoom account is *not* required. You will receive an email approximately 24 hours prior to the start of the class with a link to the webinar.

In order to receive credit, you must log in on time, attend the entire presentation, and complete an online evaluation within 30 minutes of the conclusion of the event. Attendance log and Zoom analytics will be reviewed by the CE Director. Certificates will be provided in approximately 7-10 business days.

Target audience: Social workers, case managers, discharge planners, nurses and other healthcare professionals.

SOCIAL WORKERS: CEU Creations, #1239, is approved as an ACE provider to offer social work continuing education by the Association of Social Work Boards (ASWB) Approved Continuing Education (ACE) program. Regulatory boards are the final authority on courses accepted for continuing education credit. ACE provider approval period: 11/22/24-11/22/27 (pending renewal). Social workers completing this course receive 1 General continuing education credit.

CEU Creations, Inc. is recognized by the New York State Education Department's State Board for Social Work as an approved provider of continuing education for licensed social workers #SW-0616. This activity is approved for 1 contact hour.

NURSES: 1 Contact Hour - CEU Creations is an approved provider of nursing CEs through the California Board of Registered Nursing. Provider number: CEP17905. All states retain their own licensing authority through their own boards. Please make sure to check with your own state board to ensure transferability of the CE credits.

COUNSELORS: 1 Contact Hour –



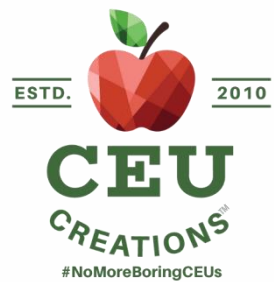
CEU Creations has been approved by NBCC as an Approved Continuing Education Provider, ACEP No. 6941. Programs that do not qualify for NBCC credit are clearly identified. CEU Creations is solely responsible for all aspects of the programs.

CEU Creations, Inc. is recognized by the New York State Education Department's State Board for Mental Health Practitioners as an approved provider of continuing education for licensed mental health counselors. #MHC-0199. This activity is approved for 1 contact hour.

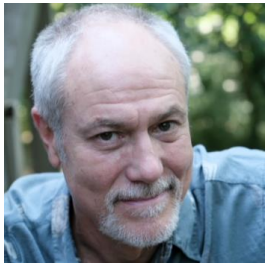
LONG TERM CARE ADMINISTRATORS: This program has been submitted for Continuing Education for total 1 Participant Hour to NAB/NCERS, but is not yet approved. For more information, contact Jessica Patterson at jessica@ceuc creationsinc.com

All states retain their own licensing authority through their own boards. Please make sure to check with your own state board to ensure transferability of the CE credits.

Life Transitions and Cognitive Function: A Play-Inspired Exploration



PRESENTERS:



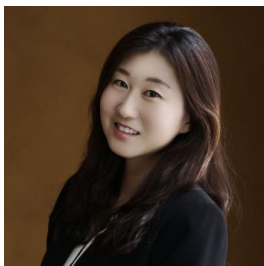
Barry Stoltze,
Actor

Barry Stoltze has been a professional actor for nearly 50 years. He has voiced hundreds of commercials, worked on audiobooks, animation, and gaming, and has appeared extensively on stage and screen. In 2022, he was a proud participant in CEU Creations' online production of *TURNING INTO THE SKID* with Judith Gantly. In 2023, he was part of the ensemble of *PRAYER FOR THE FRENCH REPUBLIC* at Actor's Express which won the Suzi Award for Best Play, a thought-provoking production that included his current CEU Creations scene partner, Carolyn Cook. In the winter of 2025, he will be portraying an immortal prophet in the new musical *KING OF PANGEA* at the Aurora Theatre in Lawrenceville, GA. He has appeared on camera in *OZARK*, *HALT AND CATCH FIRE*, and *SLEEPY HOLLOW* and in the films *THE LONGEST RIDE* and *TYLER PERRY'S BOO! 2*, among others. Additionally, at Synchronicity Theatre in 2018, Barry wrote and produced *I CAN'T TECHNO: A MUSICAL GUIDE TO MODERN TIMES*, with song parodies and comedy sketches about Mankind dealing with technology down through the Ages. And in October at the Shakespeare Tavern, he co-produced the 21st annual *LEND ME AN EAR*, a night of Old Time Radio recreations by union performers, which this year raised food assistance money for Open Hand.



Carolyn Cook,
Actor/Director

Carolyn Cook is the founder and first artistic director of Theatre du Reve. She has more than twenty-five years of experience as a professional actor, director, producer, teacher, and acting coach. Carolyn has worked as an actor and/or director with some of the top theaters in Atlanta including Georgia Shakespeare, Horizon Theatre, The Alliance Theatre, Actor's Express, Theatre in the Square, Seven Stages, and Theater Emory. She has taught acting and theatre studies at Emory University, Oglethorpe University, Pebblebrook High School, and the Robert Mello Studio. She is a graduate of the 2015 Memory Bridge Training Retreat, a five-day intensive program leading to positive, meaningful dementia relationships. Carolyn co-developed and performed in *Blackberry Winter*, a play by Steve Yockey about a woman coming to terms with her new role as a caregiver, and wrote and performed the one-woman autobiographical play, *Walk With Me*, where a woman sets out to meet her loved ones with dementia where they are — and returns with a guidebook for fellow travelers.



Yura Lee, PhD,
Associate
Professor,
Helen Bader School
of Social Welfare,
University of
Wisconsin-
Milwaukee

Dr. Yura Lee is an Associate Professor at the Helen Bader School of Social Welfare at the University of Wisconsin-Milwaukee. Her research primarily focuses on individuals with Alzheimer's disease and related dementias (ADRD) and their caregivers. Dr. Lee's dedication to ADRD research stems from her personal experience as a primary caregiver for her grandfather, who was diagnosed with Alzheimer's disease. This experience has significantly influenced her gerontological social work research, which centers on two key areas: (a) identifying risk and protective factors for ADRD, and (b) understanding the needs and challenges faced by dementia caregivers.

Dr. Lee has investigated a range of risk and protective factors, including educational attainment, multiple chronic conditions, life transitions (e.g., widowhood, retirement), late-life engagement in activities (mental, physical, and social), and sociocultural influences (e.g., acculturation and social support). Notably, her research on the biopsychosocial mechanisms of widowhood and its impact on cognitive function was funded by the Rutgers University Asian Resource Center for Minority Aging.

Additionally, Dr. Lee currently serves as the principal investigator for the "Going Home" project, a reminiscence intervention for individuals with dementia and their family caregivers, funded by the Alzheimer's Association. She actively collaborates on several interdisciplinary aging research initiatives with scholars from diverse fields, including neurology, nursing, public health, biomedical engineering, kinesiology, and information science, focusing on dementia care interventions utilizing assistive technology. Dr. Lee earned her PhD in Social Work from the University of Southern California.